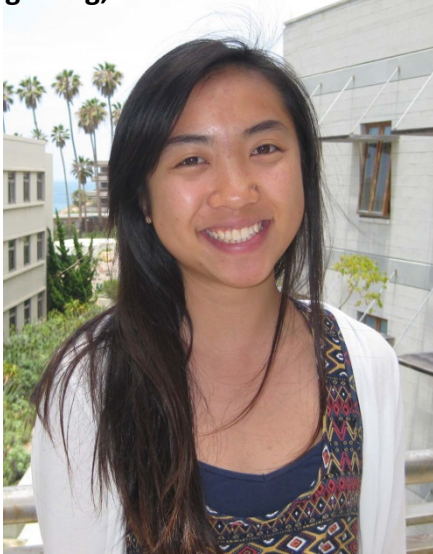


CCE-LTER REU's Summer 2015



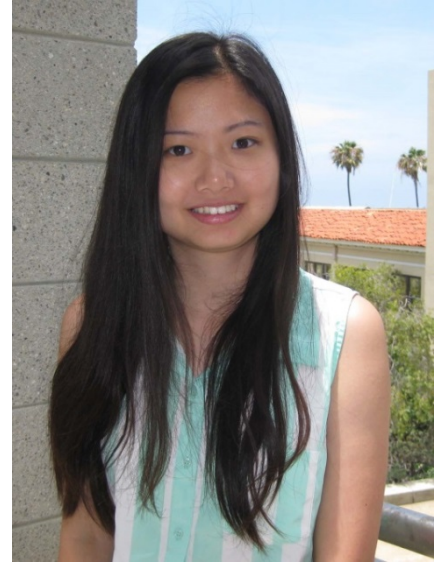
Linda Tong analyzed zooplankton grazing, Ohman lab



Abdallah Alrayyes developed a proxy measure of seawater pH, Goericke lab



Vivian Tong researched marine cyanobacteria, Palenik lab



Raul Martinez analyzed trace metals in seawater, Barbeau lab



Five REU interns worked in various CCE LTER labs at SIO this summer. Besides lots of hard work, bi-weekly lunches were held with mentors for various discussions, as well as lab tours & grad. school advice. **THANKS to ALL the mentors!**

Maria Winters used Matlab to manipulate biophysical models, Miller lab



Awesome!